

# Bearing Supplies

Norwich

tel: 01603891800

email: [sales@bearing-supplies.co.uk](mailto:sales@bearing-supplies.co.uk)

web: [www.bearing-supplies.co.uk](http://www.bearing-supplies.co.uk)

# ***POWERDRIVE TAPER LOCK PULLEYS***





# TAPER LOCK PULLEYS

## INTRODUCTION

POWERDRIVE IS WIDELY RECOGNISED AS A LEADING BRAND OF POWER TRANSMISSION COMPONENTS.

POWERDRIVE Taper Lock V-Belt pulleys are produced under ISO9001 conditions and meet stringent quality checks. Manufactured using fine-grain GG25 cast iron & suitable for belt speeds up to 40mtr per second, POWERDRIVE Taper Lock pulley range offers quality at affordable prices.

### FEATURES & BENEFITS

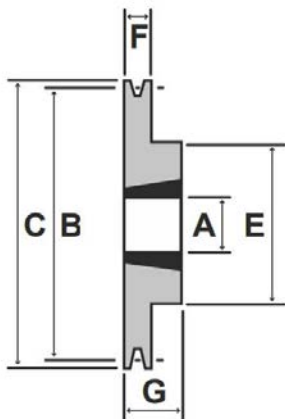
- POWERDRIVE Taperlock pulleys , produced to consistently high quality.
- Manufactured from grade GG25 fine grain cast iron giving extended life and high resistance to wear.
- Black coloured phosphate finish.
- Statically balanced for belt speeds up to 40m/sec (Q6.3balance spec).
- Larger pulleys more than 100kg are dynamically balanced.
- Pulley groove specification conforms to ISO4183. Suitable for classical, wedge and cogged raw edge belts.



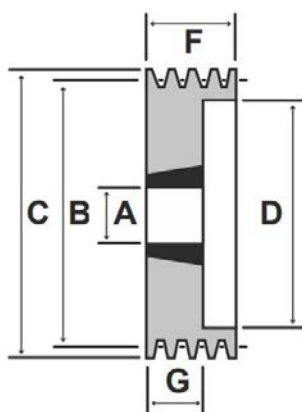
# TAPER LOCK V-BELT PULLEYS

## CONFIGURATION

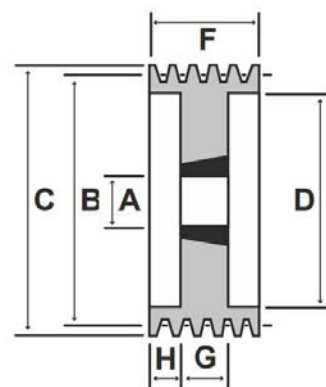
1.



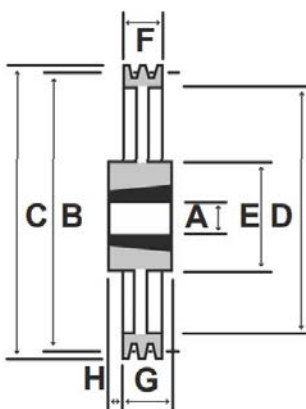
2.



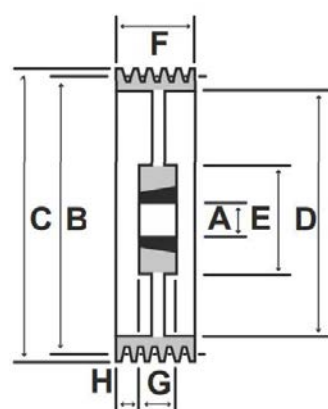
3.



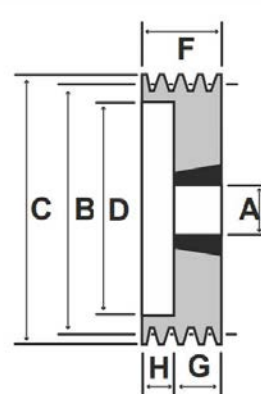
4.



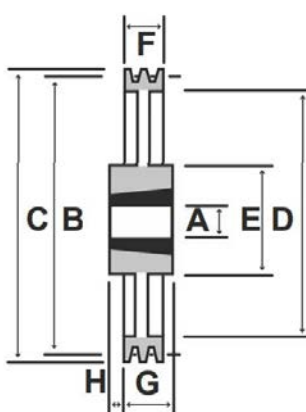
5.



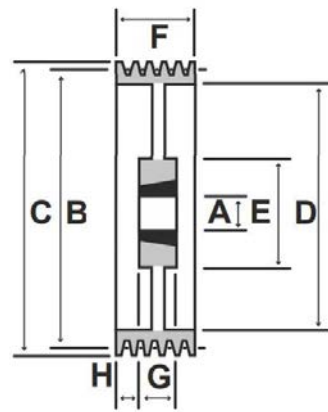
6.



7.



8.



9.

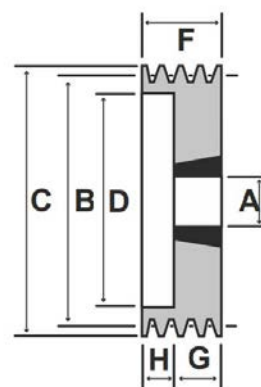


TABLE KEY

A	Inner Bore Diameter Max	F	Overall Sheave Depth
B	Pitch Diameter	G	Bush Seat Length
C	Overall Outer Diameter	H	Inner Recess Length
D	Inner Recess Diameter	Z	Number of Grooves
E	Outer Hub Diameter		



# TAPER LOCK PULLEYS



## TAPER BUSH V-BELT PULLEYS “SPZ” SECTION

SPZ Section													SPZ Section												
Part Number	B	C	Z	Bush No	E	A Max	G	Pulley Type	D	H	Weight (kg)	F	Part Number	B	C	Z	Bush No	E	A Max	G	Pulley Type	D	H	Weight (kg)	F
SPZ 050/2	50	54.6	2	1008		25	22	9	26	25	0.5	28	SPZ 140/2	140	144.6	2	1610		42	28	6	111	3	2.4	28
SPZ 056/1	56	60.6	1	1008		25	22	9	32	12	0.5	16	SPZ 140/3	140	144.6	3	2012		50	32	2	111		2.8	40
SPZ 056/2	56	60.6	2	1008		25	22	9	32	27	0.56	28	SPZ 140/4	140	144.6	4	2012		50	32	2	111		3.2	52
SPZ 060/1	60	64.6	1	1008	56	25	22	1			0.32	16	SPZ 140/5	140	144.6	5	2517		60	45	2	111		3.5	64
SPZ 063/1	63	67.6	1	1108	56	28	22	1			0.3	16	SPZ 140/6	140	144.6	6	2517		60	45	2	111		3.9	76
SPZ 063/2	63	67.6	2	1108		28	22	6	40	6	0.3	28	SPZ 150/1	150	154.6	1	1610	92	42	25	1			1.9	16
SPZ 063/3	63	67.6	3	1108		28	22	6	40	18	0.5	40	SPZ 150/2	150	154.6	2	2012	112	50	32	1			2.6	28
SPZ 067/1	67	71.6	1	1108	60	28	22	1			0.6	16	SPZ 150/3	150	154.6	3	2012		50	32	2	121		3	40
SPZ 067/2	67	71.6	2	1108		25	22	6	42	6	0.4	28	SPZ 150/4	150	154.6	4	2517		60	45	2	121		3.9	52
SPZ 067/3	67	71.6	3	1108		28	22	6	42	18	0.6	40	SPZ 150/5	150	154.6	5	2517		60	45	2	121		4.3	64
SPZ 071/1	71	75.6	1	1108	60	28	22	1			0.4	16	SPZ 150/6	150	154.6	6	2517		60	45	2	121		4.7	76
SPZ 071/2	71	75.6	2	1108		28	28	6	42	6	0.5	28	SPZ 160/1	160	164.6	1	1610	92	42	25	1			2.1	16
SPZ 071/3	71	75.6	3	1108		28	22	6	42	18	0.6	40	SPZ 160/2	160	164.6	2	2012	112	50	32	1			2.8	28
SPZ 075/1	75	79.6	1	1108	60	28	22	1			0.4	16	SPZ 160/3	160	164.6	3	2012		50	32	2	131		3.2	40
SPZ 075/2	75	79.6	2	1210		32	28	6	51	3	0.6	28	SPZ 160/4	160	164.6	4	2517		60	45	2	131		4.7	52
SPZ 075/3	75	79.6	3	1210		32	25	6	51	15	0.6	40	SPZ 160/5	160	164.6	5	2517		60	45	2	131		5.1	64
SPZ 080/1	80	84.6	1	1210	75	32	25	1			0.5	16	SPZ 160/6	160	164.6	6	2517		60	45	2	131		5.5	76
SPZ 080/2	80	84.6	2	1210		32	28	6	51	3	0.6	28	SPZ 170/1	170	174.6	1	1610	92	42	25	1			2.5	16
SPZ 080/3	80	84.6	3	1210		32	25	6	51	15	0.8	40	SPZ 170/2	170	174.6	2	2012	112	50	32	1			2.9	28
SPZ 080/4	80	84.6	4	1210		32	25	6	51	27	0.9	52	SPZ 170/3	170	174.6	3	2012		50	32	2	141		3.2	40
SPZ 085/1	85	89.6	1	1210	80	32	25	1			0.6	16	SPZ 180/1	180	184.6	1	1610	92	42	25	1			2.8	16
SPZ 085/2	85	89.6	2	1610		42	28	6	60	3	0.7	28	SPZ 180/2	180	184.6	2	2012	112	50	32	8	152	3	3	28
SPZ 085/3	85	89.6	3	1610		42	25	6	60	15	0.8	40	SPZ 180/3	180	184.6	3	2012	112	50	32	7	151	4	3.3	40
SPZ 085/4	85	89.6	4	1610		42	25	6	60	27	0.9	52	SPZ 180/4	180	184.6	4	2517		60	45	2	151		6.5	52
SPZ 085/5	85	89.6	5	1610		42	25	6	60	39	1.3	64	SPZ 180/5	180	184.6	5	2517		60	45	2	151		6.9	64
SPZ 090/1	90	94.6	1	1210	80	32	25	1			0.7	16	SPZ 180/6	180	184.6	6	2517		60	45	2	151		7.3	76
SPZ 090/2	90	94.6	2	1610		42	28	6	61	3	0.7	28	SPZ 190/1	190	194.6	1	1610	92	42	25	4	162	12	3	16
SPZ 090/3	90	94.6	3	1610		42	25	6	61	15	0.9	40	SPZ 190/2	190	194.6	2	2012	112	50	32	8	162	3	3.1	28
SPZ 090/4	90	94.6	4	1610		42	25	6	61	27	1.1	52	SPZ 190/3	190	194.6	3	2012	112	50	32	7	161	4	3.4	40
SPZ 090/5	90	94.6	5	1610		42	25	6	61	39	1.4	64	SPZ 200/1	200	204.6	1	2012	112	50	32	4	171	15.5	3.2	16
SPZ 095/1	95	99.6	1	1210	85	32	25	1			0.8	16	SPZ 200/2	200	204.6	2	2012	112	50	32	4	171	3	3.1	28
SPZ 095/2	95	99.6	2	1610		42	28	6	66	3	0.8	28	SPZ 200/3	200	204.6	3	2012	112	50	32	5	171	4	3.6	40
SPZ 095/3	95	99.6	3	1610		42	25	6	66	15	1.1	40	SPZ 200/4	200	204.6	4	2517	124	60	45	7	171	3.5	5.4	52
SPZ 095/4	95	99.6	4	1610		42	25	6	66	26	1.3	52	SPZ 200/5	200	204.6	5	2517		60	45	3	171	9.5	6.1	64
SPZ 095/5	95	99.6	5	1610		42	25	6	66	39	1.6	64	SPZ 224/1	224	228.6	1	2012	112	50	32	4	195	15.5	3.5	16
SPZ 100/1	100	104.6	1	1210	85	32	25	1			0.8	16	SPZ 224/2	224	228.6	2	2012	112	50	32	4	195	3	3.4	28
SPZ 100/2	100	104.6	2	1610		42	28	6	71	3	1	28	SPZ 224/3	224	228.6	3	2012	112	60	32	5	195	4	4.2	40
SPZ 100/3	100	104.6	3	1610		42	25	6	71	15	1.2	40	SPZ 224/4	224	228.6	4	2517	124	60	45	5	195	3.5	6.1	52
SPZ 100/4	100	104.6	4	1610		42	25	6	71	26	1.4	52	SPZ 224/5	224	228.6	5	2517	124	60	45	5	195	9.5	7.1	64
SPZ 100/5	100	104.6	5	2012		50	32	6	71	32	1.6	64	SPZ 250/1	250	254.6	1	2012	112	50	32	4	221	8	3.8	16
SPZ 100/6	100	104.6	6	2012		50	32	6	71	44	1.9	76	SPZ 250/2	250	254.6	2	2012	112	50	32	4	221	2	3.9	28
SPZ 106/1	106	110.6	1	1610	92	42	25	1			0.9	16	SPZ 250/3	250	254.6	3	2012	112	50	32	5	221	4	4.7	40
SPZ 106/2	106	110.6	2	1610		42	28	6	76	3	1.2	28	SPZ 250/4	250	254.6	4	2517	124	60	45	5	221	3.5	6.8	52
SPZ 106/3	106	110.6	3	1610		42	25	6	76	15	1.4	40	SPZ 250/5	250	254.6	5	2517	124	60	45	5	221	9.5	8.1	64
SPZ 106/4	106	110.6	4	1610		42	25	6	76	26	1.6	64	SPZ 280/2	280	284.6	2	2012	112	50	32	4	251	2	4.9	28
SPZ 106/5	106	110.6	5	2012		50	32	6	76	32	1.9	64	SPZ 280/3	280	284.6	3	2517	124	60	45	4	251	2.5	7.1	40
SPZ 106/6	106	110.6	6	2012		50	32	6	76	44	2.2	76	SPZ 280/4	280	284.6	4	2517	124	60	45	5	251	3.5	8.2	52
SPZ 112/1	112	116.6	1	1610	92	42	25	1			1	16	SPZ 280/5	280	284.6	5	2517	124	60	45	5	251	9.5	10.51	64
SPZ 112/2	112	116.6	2	1610		42	28	6	83	3	1.4	28	SPZ 315/1	315	319.6	1	2012	112	50	32	4	286	8	5.8	16
SPZ 112/3	112	116.6	3	2012		50	32	6	83	8	1.5	40	SPZ 315/2	315	319.6	2	2012	112	50	32	4	286	2	5.9	28
SPZ 112/4																									



# TAPER LOCK PULLEYS



## TAPER BUSH V-BELT PULLEYS “SPA” SECTION

SPA Section													SPA Section												
Part Number	B	Z	Bush No.	E	A Max	G	Pulley Type	D	H	C	Weight (kg)	F	Part Number	B	Z	Bush No.	E	A Max	G	Pulley Type	D	H	C	Weight (kg)	F
SPA 063/1	63	1	1008	56	28	22	1	-	-	69.2	0.33	20	SPA 160/4	160	4	2517	-	60	45	2	125	-	166.2	5.2	65
SPA 063/2	63	2	1008	-	28	22	6	32.5	13		0.38	35	SPA 160/5	160	5	2517	-	60	45	3	125	18	166.2	5.56	80
SPA 067/1	67	1	1108	56	28	22	1	-	-	73.2	0.35	20	SPA 170/1	170	1	1610	92	42	25	1	-	-	176.2	2.66	20
SPA 067/2	67	2	1108	-	28	22	-	37	13	73.2	0.47	35	SPA 170/2	170	2	2012	-	50	32	6	135	3	176.2	4.46	35
SPA 071/1	71	1	1108	60	28	22	1	-	-	77.2	0.37	20	SPA 170/3	170	3	2517	-	60	45	6	135	5	176.2	5.25	50
SPA 071/2	71	2	1108	-	28	22	6	40	13	77.2	0.54	35	SPA 180/1	180	1	1610	92	42	25	4	145	-	186.2	2.1	20
SPA 071/3	71	3	1108	-	28	22	6	40	28	77.2	0.74	50	SPA 180/2	180	2	2012	108	50	32	7	146	1.5	186.2	5.1	35
SPA 075/1	75	1	1108	60	28	22	1	-	-	81.2	0.44	20	SPA 180/3	180	3	2517	-	60	45	6	146	5	186.2	6.3	50
SPA 075/2	75	2	1108	-	28	22	6	44	13	81.2	0.65	35	SPA 180/4	180	4	2517	-	60	45	2	146	-	186.2	7	65
SPA 075/3	75	3	1108	-	28	22	6	44	28	81.2	0.84	50	SPA 180/5	180	5	3020	-	75	51	3	146	15	186.2	6.81	80
SPA 080/1	80	1	1210	75	32	25	1	-	-	86.2	0.53	20	SPA 180/6	180	6	3020	-	75	51	3	146	22	186.2	6.65	95
SPA 080/2	80	2	1210	-	32	25	6	50	10	86.2	0.62	35	SPA 190/1	190	1	1610	92	42	25	4	156	-	196.2	2.31	20
SPA 080/3	80	3	1210	-	32	25	6	50	25	86.2	0.82	50	SPA 190/2	190	2	2012	108	50	32	6	156	1.5	196.2	3.68	35
SPA 085/1	85	1	1210	80	32	25	-	-	-	91.2	0.68	20	SPA 190/3	190	3	2517	-	60	45	6	156	5	196.2	7.1	50
SPA 085/2	85	2	1210	-	32	25	6	55	10	91.2	0.73	35	SPA 190/4	190	4	2517	-	60	45	2	156	-	196.2	7.95	65
SPA 085/3	85	3	1210	-	32	25	6	55	25	91.2	0.96	50	SPA 200/1	200	1	2012	108	50	32	4	165	-	206.2	2.8	20
SPA 090/1	90	1	1210	80	32	25	1	-	-	96.2	0.8	20	SPA 200/2	200	2	2517	123	60	45	8	165	5	206.2	4.7	35
SPA 090/2	90	2	1610	-	42	25	6	59	10	96.2	0.8	35	SPA 200/3	200	3	2517	123	60	45	7	165	2.5	206.2	5.6	50
SPA 090/3	90	3	1610	-	42	25	6	59	25	96.2	1.1	50	SPA 200/4	200	4	3020	-	75	51	2	165	-	206.2	8.5	65
SPA 090/4	90	4	1615	-	42	38	6	59	27	96.2	1.4	65	SPA 200/5	200	5	3020	-	75	51	3	156	15	206.2	8.96	80
SPA 095/1	95	1	1210	85	32	25	1	-	-	101	0.9	20	SPA 200/6	200	6	3020	-	75	51	3	165	22	206.2	10	95
SPA 095/2	95	2	1610	-	42	25	6	63	10	101	0.9	35	SPA 212/1	212	1	2012	110	50	32	4	177	-	218.2	3.85	20
SPA 095/3	95	3	1610	-	42	25	6	63	25	101	1.3	50	SPA 212/2	212	2	2517	123	60	45	4	177	5	218.2	6.05	35
SPA 095/4	95	4	1615	-	42	38	6	63	27	101	1.7	65	SPA 212/3	212	3	2517	123	60	45	5	177	2.5	218.2	6.9	50
SPA 100/1	100	1	1610	85	42	25	1	-	-	106	0.9	20	SPA 212/4	212	4	3020	-	75	51	-	177	-	218.2	9.53	65
SPA 100/2	100	2	1610	-	42	25	6	66	10	106	1.1	35	SPA 224/1	224	1	2012	112	50	32	4	189	-	230.2	4.02	20
SPA 100/3	100	3	1610	-	42	25	2	66	-	106	1.4	50	SPA 224/2	224	2	2517	124	60	45	4	189	-	230.2	6.65	35
SPA 100/4	100	4	1610	-	42	28	-	66	-	106	1.9	65	SPA 224/3	224	3	2517	124	60	45	5	189	2.5	230.2	7.45	50
SPA 100/5	100	5	1610	-	42	25	2	66	-	106	1.9	80	SPA 224/4	224	4	3020	-	75	51	2	189	-	230.2	11.34	65
SPA 100/6	100	6	1615	-	42	38	3	66	30	106	2.23	95	SPA 224/5	224	5	3020	-	75	51	2	189	-	230.2	12.3	80
SPA 106/1	106	1	1610	92	42	25	1	-	-	112	0.9	20	SPA 236/1	236	1	2012	112	50	32	8	202	-	242.2	4.6	20
SPA 106/2	106	2	1610	-	42	25	6	72	10	112	1.3	35	SPA 236/2	236	2	2517	124	60	45	4	202	-	242.2	7.3	35
SPA 106/3	106	3	1610	-	42	25	2	72	-	112	1.6	50	SPA 236/3	236	3	2517	124	60	45	5	202	2.5	242.2	8.2	30
SPA 106/4	106	4	2012	-	50	32	6	72	33	112	1.7	65	SPA 250/1	250	1	2012	112	50	32	4	215	-	256.2	4.74	20
SPA 106/5	106	5	2012	-	50	32	6	72	48	112	2.01	80	SPA 250/2	250	2	2517	124	60	45	4	215	5	256.2	6.58	35
SPA 112/1	112	1	1610	92	42	25	1	-	-	118	1	20	SPA 250/3	250	3	2517	124	60	45	5	215	2.5	256.2	7.91	50
SPA 112/2	112	2	1610	-	42	25	6	78	10	118	1.5	35	SPA 250/4	250	4	3020	159	75	51	5	215	-	256.2	10.25	65
SPA 112/3	112	3	2012	-	50	32	6	78	18	118	1.7	50	SPA 250/5	250	5	3020	159	75	51	7	215	15	256.2	17.32	80
SPA 112/4	112	4	2012	-	50	32	6	78	33	118	2.1	65	SPA 250/6	250	6	3020	155	75	51	7	215	22	256.2	12.87	95
SPA 112/5	112	5	2012	-	50	32	6	78	48	118	2.33	80	SPA 280/1	280	1	2012	112	50	32	4	245	-	286.2	5.84	20
SPA 112/6	112	6	2012	-	50	32	6	63	63	118	2.85	95	SPA 280/2	280	2	2517	124	60	45	4	245	-	286.2	8.26	35
SPA 118/1	118	1	1610	92	42	25	1	-	-	124	1.1	20	SPA 280/3	280	3	2517	124	60	45	5	245	2.5	286.2	8.28	50
SPA 118/2	118	2	1610	-	42	25	6	84	10	124	1.4	35	SPA 280/4	280	4	3020	159	75	51	5	245	7	286.2	11.36	65
SPA 118/3	118	3	2012	-	50	32	2	84	-	124	2	50	SPA 280/5	280	5	3525	175	90	65	5	245	4.5	286.2	17.2	80
SPA 118/4	118	4	2012	-	50	32	2	84	-	124	2.4	65	SPA 300/1	300	1	2012	112	50	32	4	275	-	306.2	6.015	20
SPA 118/5	118	5	2012	-	50	32	6	84	-	124	2.75	80	SPA 300/2	300	2	2517	124	60	45	4	275	-	306.2	9.45	35
SPA 118/6	118	6	2012	-	50	32	6	63	63	124	3.13	95	SPA 315/1	315	1	2012	112	50	32	4	280	-	321.2	7.81	20
SPA 125/1	125	1	1610	92	42	25	1	-	-	131	1.3	20	SPA 315/2	315	2	2517	124	60	45	4	280	-	321.2	10	35
SPA 125/2	125	2	1610	-	42	25	6	91	10	131	1.9	35	SPA 315/3	315	3	3020	159	75	51	4	280	0.5	321.1	12.26	50
SPA 125/3																									



# TAPER LOCK PULLEYS



## TAPER BUSH V-BELT PULLEYS “SPB” SECTION

SPB Section													SPB Section												
Part Number	B	Z	Bush No.	E	A Max	G	Pulley Type	D	H	C	Weight (kg)	F	Part Number	B	Z	Bush No.	E	A Max	G	Pulley Type	D	H	C	Weight (kg)	F
SPB 100/1	100	1	1610	-	42	25	1	-	-	107.6	0.91	25	SPB 236/1	236	1	2012	104	50	32	4	193	3.5	244	5.5	25
SPB 100/2	100	2	1610	-	42	25	6	62	19	107.6	1.25	44	SPB 236/2	236	2	2517	117	60	45	0	193	-	244	8.75	44
SPB 100/3	100	3	1610	-	42	25	6	62	38	107.6	1.95	63	SPB 236/3	236	3	2517	117	60	45	5	193	-	244	10.05	63
SPB 106/1	106	1	1610	-	42	25	1	-	-	113.6		25	SPB 236/4	236	4	3020	-	75	51	3	193	16	244	14.8	82
SPB 106/2	106	2	1610	-	42	25	-	67	19	113.6		44	SPB 236/5	236	5	3525	-	90	65	3	193	6	244	16.14	101
SPB 106/3	106	3	1610	-	42	25	6	67	38	113.6		63	SPB 236/6	236	6	3525	-	90	65	-	193	16	244	19.25	120
SPB 112/1	112	1	1610	-	42	25	1	-	-	119.6	1.15	25	SPB 250/1	250	1	2012	104	50	32	4	207	3.5	258	6.2	25
SPB 112/2	112	2	1610	-	42	25	-	72	19	119.6	1.68	44	SPB 250/2	250	2	2517	125	60	45	4	207	-	258	8.75	44
SPB 112/3	112	3	1610	-	42	25	6	72	38	119.6	2.25	63	SPB 250/3	250	3	3020	144	75	51	5	207	-	258	12.5	63
SPB 118/1	118	1	1610	-	42	25	1	-	-	125.6	1.45	25	SPB 250/4	250	4	3020	144	75	51	-	207	16	258	12.6	82
SPB 118/2	118	2	1610	-	42	25	2	78	-	125.6	2	44	SPB 250/5	250	5	3525	-	90	89	3	207	6	258	22.75	101
SPB 118/3	118	3	1610	-	42	25	2	78	-	125.6	2.6	63	SPB 250/6	250	6	3525	-	90	89	3	-	-	258	24.25	120
SPB 125/1	125	1	1610	-	42	25	1	-	-	132.6	1.7	25	SPB 250/6	250	6	3535	-	90	89	-	207	16	258		120
SPB 125/2	125	2	2012	-	50	32	2	82	-	132.6	2.1	44	SPB 280/1	280	1	2012	104	50	32	4	237	3.5	288	6.83	25
SPB 125/3	125	3	2012	-	50	32	2	82	-	132.6	2.44	63	SPB 280/2	280	2	2517	125	60	45	4	237	-	288	9.91	44
SPB 125/4	125	4	2012	-	50	32	3	82	25	132.6	2.94	82	SPB 280/3	280	3	3020	144	75	51	5	237	6	288	12.02	63
SPB 125/5	125	5	2012	-	50	32	6	87	69	132.6	3.8	101	SPB 280/4	280	4	3020	144	75	51	5	237	16	288	13.94	82
SPB 132/1	132	1	1610	-	42	25	1	-	-	139.6	2.1	25	SPB 280/5	280	5	3525	175	90	89	7	237	6	288	21.6	101
SPB 132/2	132	2	2012	-	50	32	2	89	-	139.6	2.37	44	SPB 280/6	280	6	3525	-	90	89	7	-	-	288	23.35	120
SPB 132/3	132	3	2012	-	50	32	2	89	-	139.6	3.08	63	SPB 280/6	280	6	3535	175	90	89	-	237	16	288		120
SPB 132/4	132	4	2012	-	50	32	3	89	25	139.6	3.9	82	SPB 300/2	300	2	2517	125	60	45	4	257	-	308		44
SPB 140/1	140	1	1610	-	42	25	1	-	-	147.6	2.16	25	SPB 300/3	300	3	3020	144	75	51	-	257	6	308		63
SPB 140/2	140	2	2012	-	50	32	2	97	-	147.6	2.8	44	SPB 300/4	300	4	3020	175	-	51	5	257	-	308		82
SPB 140/3	140	3	2012	-	50	32	2	97	-	147.6	3.7	63	SPB 300/6	300	6	3525	-	-	-	-	-	-	308		120
SPB 140/4	140	4	2517	-	60	45	3	100	18.5	147.6	4	82	SPB 300/6	300	6	3535	175	90	89	-	257	16	308		120
SPB 140/5	140	5	2517	-	60	45	3	97	28	147.6	4.3	101	SPB 315/1	315	1	2012	104	50	32	4	272	3.5	323	9.34	25
SPB 140/6	140	6	2517	-	60	45	-	100	37.5	147.6	5.1	120	SPB 315/2	315	2	2517	125	60	45	4	272	-	323	12.3	44
SPB 150/1	150	1	1610	-	42	25	1	-	-	157.6	2.46	25	SPB 315/3	315	3	3020	144	75	51	5	272	6	323	14.25	63
SPB 150/2	150	2	2012	-	50	32	2	107	-	157.6	3.4	44	SPB 315/4	315	4	3525	175	90	89	5	272	3.5	323	21.7	82
SPB 150/3	150	3	2517	-	60	45	2	107	-	157.6	4.03	63	SPB 315/5	315	5	3525	175	90	89	5	272	6	323	25.3	101
SPB 150/4	150	4	2517	-	60	45	3	107	18.5	157.6		82	SPB 315/6	315	6	3535	175	90	89	5	272	16	323	24.14	120
SPB 150/5	150	5	2517	-	60	45	3	107	28	157.6		101	SPB 335/2	335	2	2517	125	60	45	4	292	3.5	343		44
SPB 150/6	150	6	2517	-	60	45	3	107	37.5	157.6	6.58	120	SPB 335/3	335	3	3020	144	75	51	5	292	6	343		63
SPB 160/1	160	1	1610	-	42	25	1	-	-	167.6	2.92	25	SPB 335/4	335	4	3525	-	-	-	5	-	-	343		82
SPB 160/2	160	2	2012	-	50	32	2	117	-	167.6	3.91	44	SPB 335/4	335	4	3535	175	90	89	-	312	3.5	343		82
SPB 160/3	160	3	2517	-	60	45	-	117	-	167.6	4.38	63	SPB 335/5	335	5	3535	175	90	89	5	292	6	343		101
SPB 160/4	160	4	2517	-	60	45	-	117	18.5	167.6	5.64	82	SPB 335/6	335	6	3535	175	90	89	-	292	16	343		120
SPB 160/5	160	5	2517	-	60	45	3	117	28	167.6	6.6	101	SPB 355/2	355	2	3020	144	75	51	4	312	3.5	363	15.12	44
SPB 160/6	160	6	3020	-	75	51	3	118	34.5	167.6	6.8	120	SPB 355/3	355	3	3020	144	75	51	5	312	6	363	17.23	63
SPB 160/8	160	8	3020	-	75	51	3	118	53.5	167.6		158	SPB 355/4	355	4	3535	175	90	89	4	312	3.5	363	23.13	82
SPB 170/1	170	1	1610	-	42	25	1	-	-	177.6	3.33	25	SPB 355/5	355	5	3525	175	90	89	5	312	6	363	28.87	101
SPB 170/2	170	2	2012	-	50	32	2	127	-	177.6	4.53	44	SPB 355/6	355	6	3535	175	90	89	-	312	16	363	28.35	120
SPB 170/3	170	3	2517	-	60	45	2	127	-	177.6	5.7	63	SPB 355/8	355	8	3525	-	90	89	-	-	-	363	34.06	158
SPB 170/4	170	4	2517	-	60	45	3	127	18.5	177.6	6.65	82	SPB 355/8	355	8	3535	175	90	89	-	312	35	363		158
SPB 170/5	170	5	3020	-	75	51	3	127	25	177.6	6.7	101	SPB 375/5	375	5	3525	-	-	-	-	-	-	383		101
SPB 170/6	170	6	3020	-	75	51	-	127	34.5	177.6	7.6	120	SPB 400/2	400	2	3020	150	75	51	4	357	3.5	408	18.73	44
SPB 170/8	170	8	3030	-	75	76	-	127	41	177.6		158	SPB 400/3	400	3	3535	175	90	89	5	357	13	408	19.85	63
SPB 180/1	180	1	1610	90	42	25	1	132	-	187.6	2.48	25	SPB 400/4	400	4	3525	-	90	89	-	-	-	408	26.6	82
SPB 180/2	180	2	2517	120	60	45	1	-	-	187.6	5.6	44	SPB 400/4	400	4	3535	175	90	89	-	357	3.5	408		82



# TAPER LOCK PULLEYS



## TAPER BUSH V-BELT PULLEYS “SPC” SECTION

SPC Section													SPC Section												
Part Number	B	Z	Bush No.	E	A Max	G	Pulley Type	D	H	C	Weight (kg)	F	Part Number	B	Z	Bush No.	E	A Max	G	Pulley Type	D	H	C	Weight (kg)	F
SPC 200/3	200	3	2517	86	60	45	3	143		210.2	10.3	85	SPC 335/4	335	4	3525	114			7	283				
SPC 200/4	200	4	3020	90	75	51	3	143		210.2	11.4	111	SPC 335/5	335	5	3525	114			-	283				
SPC 200/5	200	5	3525	90	90	65	3	143		210.2	16.1	136	SPC 335/8	335	8	3525				5					
SPC 200/6	200	6	3525	90	90	65	3	143		210.2	14.2	162	SPC 355/3	355	3	3525	110	90	65	-	298		365	25.82	85
SPC 200/8 (3525)	200	8	3525		90	65	-			210.2	18.85	213	SPC 355/4	355	4	3525	114	90	65	-	298		365	33	111
SPC 200/8 (3535)	200	8	3535				3						SPC 355/5	355	5	3525	114	90	65	-	298		365	33.85	136
SPC 212/3	212	3	3020		75	51	3			222.2	11.1	85	SPC 355/6	355	6	3525	114	90	65	-	298		365	37.25	162
SPC 212/4	212	4	3020		75	51	3			222.2	13.05	111	SPC 355/8	355	8	3525		100	65	5			365	49.3	213
SPC 212/6	212	6	3535		90	65	3			222.2	20.65	162	SPC 375/3	375	3	3525		90	65	-			385	27.7	85
SPC 224/3	224	3	3020	90	75	51	3	168		234.2	12.7	85	SPC 375/4	375	4	3525		90	65	-			385	33.5	111
SPC 224/4	224	4	3525	90	90	65	3	168		234.2	16.3	111	SPC 375/5 (3525)	375	5	3525		90	65	-			385	34.4	136
SPC 224/5	224	5	3525	90	90	65	3	168		234.2	16.66	136	SPC 375/5 (3535)	375	5	3535				-					
SPC 224/6	224	6	3525		90	65	3			234.2	18.73	162	SPC 375/6	375	6	3525		100	65	7			385	39.75	162
SPC 224/8	224	8	3525		90	65	-			234.2	24.77	213	SPC 375/8	375	8	4030		110	76	-			385	56.9	213
SPC 236/3	236	3	3020		75	51	3			246.2	14.35	85	SPC 400/3	400	3	3525	114	90	65	-	343		410	32.52	85
SPC 236/4	236	4	3525		90	65	3			246.2	18.87	111	SPC 400/4	400	4	3525	114	90	65	-	343		410	36.9	111
SPC 236/5	236	5	3535		90	65	3			246.2	16.65	136	SPC 400/5	400	5	3525	120	90	65	-	343		410	37.45	136
SPC 236/6	236	6	3525		90	65	3			246.2	23.16	162	SPC 400/6	400	6	3525	120	100	65	7	343		410	47.1	162
SPC 236/8	236	8	3525		90	65	-			246.2	27.94	213	SPC 400/8	400	8	4030		110	76	7			410	61.5	213
SPC 250/2	250	2	3020	98			-	193					SPC 425/4	425	4	3525		90	65	-			435	37.6	111
SPC 250/3	250	3	3020	92	75	51	-	193		260.2	16.45	85	SPC 425/6	425	6	4545		100	89	-			435	53.1	162
SPC 250/4	250	4	3525	100	90	65	3	193		260.2	22.57	111	SPC 425/8	425	8	4535		110	89	-			435	67.65	213
SPC 250/5	250	5	3525	102	90	65	-	193		260.2	22	136	SPC 425/10	425	10	5050				-					
SPC 250/6	250	6	3525	102	90	65	3	193		260.2	27.2	162	SPC 450/4	450	4	3525	120	90	65	-	393		460	41.6	111
SPC 250/8	250	8	3525		90	65	-			260.2	31.5	213	SPC 450/5 (3525)	450	5	3525	120	100	65	5	393		460	48.24	136
SPC 265/3	265	3	3525		90	2	3			275.2	23.5	85	SPC 450/5 (4040)	450	5	4040				-					
SPC 265/6	265	6	3525		90	65	3			275.2	27.55	162	SPC 450/6	450	6	4535	120	110	89	-	393		460	60.98	162
SPC 265/8	265	8	3525		90	65	-			275.2	36.15	213	SPC 450/8	450	8	4535		125	89	-			460	81	213
SPC 280/3	280	3	3525	92	90	65	3	223		290.2	22.85	85	SPC 475/6	475	6	4535		110	89	5			485	61.3	162
SPC 280/4	280	4	3525	100	90	65	3	223		290.2	25.42	111	SPC 475/8	475	8	4535		125	89	-			485	56.7	213
SPC 280/5	280	5	3525	102	90	65	3	223		290.2	28.45	136	SPC 500/4	500	4	3525	126	90	65	-	443		510	45.45	111
SPC 280/6	280	6	3525	102	90	65	-	223		290.2	31.17	162	SPC 500/5	500	5	4040	126	100	65	5	443		510	55.69	136
SPC 280/8	280	8	3525		90	65	3			290.2	39.85	213	SPC 500/6	500	6	4535	126	110	89	-	443		510	67.25	162
SPC 280/10	280	10	4040				-						SPC 500/8	500	8	4535		125	89	-			510	87.8	213
SPC 300/3	300	3	3525	92	90	65	5	243		310.2	20.35	85	SPC 530/8	530	8	5050		125	89	-			540	89.31	213
SPC 300/4	300	4	3525	100	90	65	-	243		310.2	25.55	110.5	SPC 530/12	530	12	6050				-					
SPC 300/5	300	5	3525	104	90	65	-	243		310.2	26.5	136	SPC 560/6	560	6	4535	130	125	89	-	503		570	81.78	162
SPC 300/6	300	6	3525	104	90	65	-	243		310.2	31.85	161.5	SPC 560/8	560	8	4535		125	89	-			570	98.4	213
SPC 300/8	300	8	3525		100	65	3			310.2	42.73	212.5	SPC 560/12	560	12	6050				-					
SPC 315/3 (3525)	315	3	3525	92	90	65	5	258		325.2	21.9	85	SPC 590/12	590	12	6050				-					
SPC 315/3 (3535)	315	3	3535				-						SPC 630/6 (4535)	630	6	4535	130	125	89	-	573		640	101	162
SPC 315/4	315	4	3525	110	90	65	5	258		325.2	25	110.5	SPC 630/6 (5050)	630	6	5050				-					
SPC 315/5	315	5	3535	112	90	65	5	258		325.2	28.27	136	SPC 630/8	630	8	4535		125	89	-			640	105.87	213
SPC 315/6	315	6	3525	112	90	65	5	258		325.2	31.25	161.5	SPC 630/10	630	10	5050				-					
SPC 315/8	315	8	3525		100	65	-			325.2	43.67	212.5	SPC 800/6	800	6	5040		125	89	-			810	136.3	162
SPC 335/3	335	3	3535	100			-	283					SPC 800/8	800	8	5040		125	89	-			810	157.16	213

# SPECIAL DUCTILE PULLEYS

## INTRODUCTION

Distag QCS currently manufactures a range of application-specific pulleys for OEMs operating within the material processing industry. All of these pulleys are produced using ductile Iron.

### ADVANTAGES

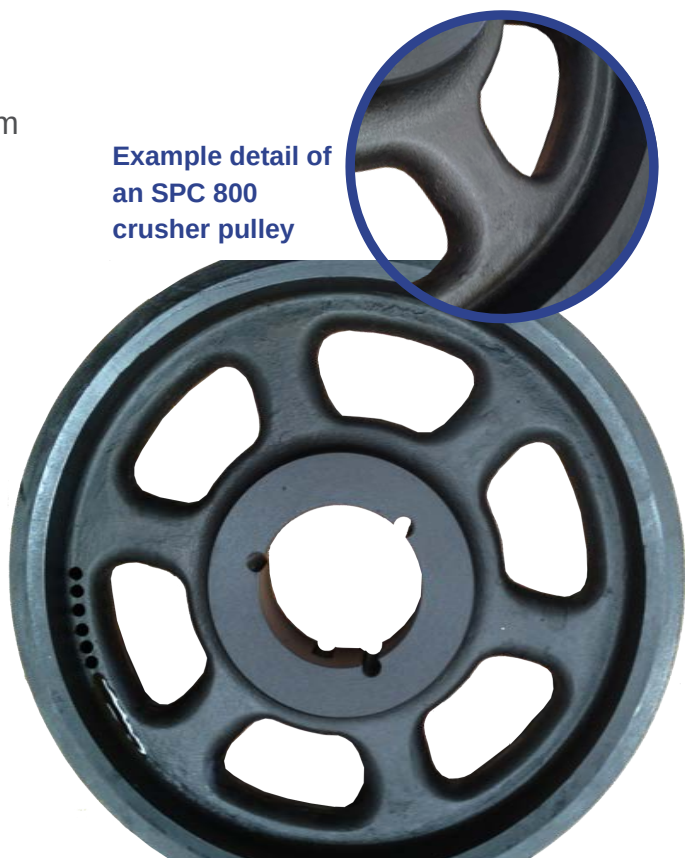
The advantages of manufacturing pulleys from Ductile Iron are:

- Greater impact strength compared with standard pulleys.
- A high shock load resistance.
- Greater tensile strength compared to standard pulleys.

As well as this all pulleys can be produced with offset mounting options and special bush sizes. For technical information or quotations on all bespoke pulleys please contact your local Distag QCS office.

Below is a selection of bespoke pulleys we currently produce:

Example detail of an SPC 800 crusher pulley



Pulley Size	T/L Bush Size	Pulley Size	Offset	Bush
SPC 630/6	5050	SPC 280/6	40mm	3525
SPC 710/6	5050	SPC 375/6	25mm	3525
SPC 400/8	5050	SPC 224/8	15mm	3535
SPC 500/8	5050	SPC 315/8	35mm	5050
SPC 630/8	5050	SPC 335/8	30mm	5050
SPC 800/8	5050			
SPC 1250/8	6050			



# TIMING BELT PULLEYS

## INTRODUCTION

**POWERDRIVE TIMING BELT PULLEYS ARE AVAILABLE TO POWER THE INCREASING NUMBER OF SYNCHRONOUS DRIVES FOUND ON MODERN MACHINERY.**

Synchronous Drives are now used to control moving parts in many automotive, industrial, and agricultural applications. They are also the chosen option for most types of automation and robotics, where a positive, zero-slip drive is required. They also provide smooth, low-noise, transmission of power, accommodate wide temperature ranges, and can be fitted into compact locations.

We can produce either pilot bore or taper bore pulleys, in aluminium or steel, with the larger sizes in cast iron.

### **Tooth Profiles Available:**

Imperial – XL, L, H, and XH

HTD Metric – 3M, 5M, 8M, and 14M

T-Series Metric – T2.5, T5, T10, AT5, and AT10

